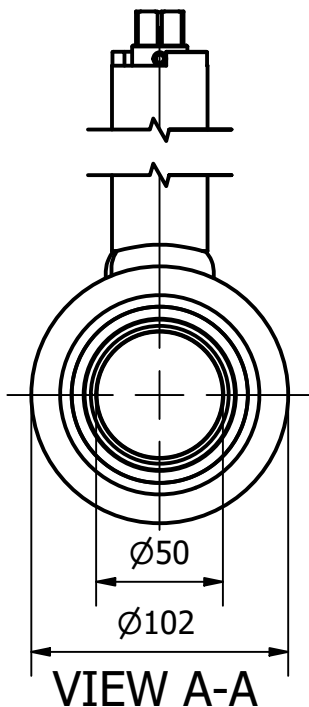
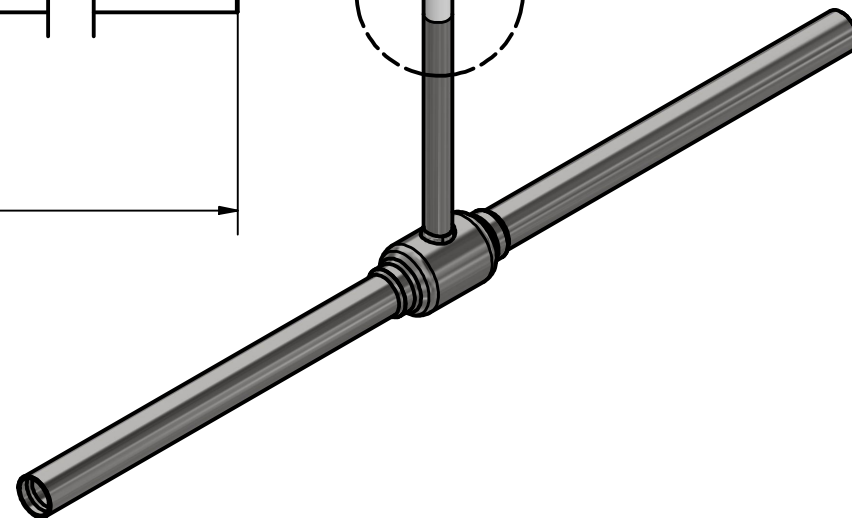
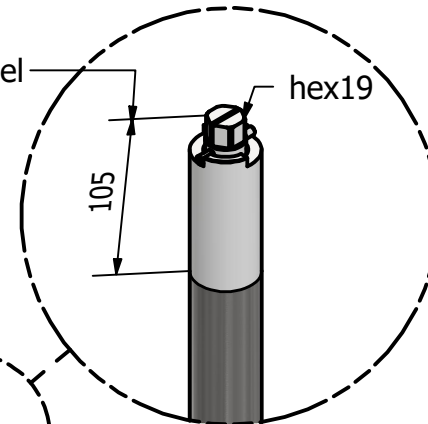


stainless steel



Valve control: 19mm hex socket.
A dry stem sealed directly at the valve body ensures greater operational safety and compensates for possible pre-insulation errors.
The stem consists of tubes 38×3 and 21×3.
*A different valve height is available upon request.

product code: GLOBTOS P50-40F 504 1,5		manufacturer: FWBV.com Fully Welded Ball Valves	
product name: GLOBTOS preinsulation dn50 pn40 full bore hex19 H=504 L=1510		prepared for: GLOBTOS valve technology	
www.GLOBTOS.com pl@globtos.com +48726500100			
drawn by: Janusz Ośmiałowski	date: 01.02.2024	scale: 1 / 3	notes:
checked by: Tomasz Ośmiałowski	version:	sheet size: A4	
approved by: Jacek Pawlikowski	weight: 15,3kg	unit: mm	