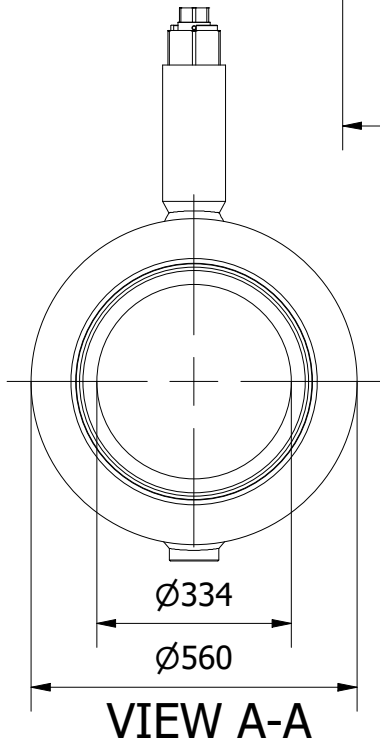
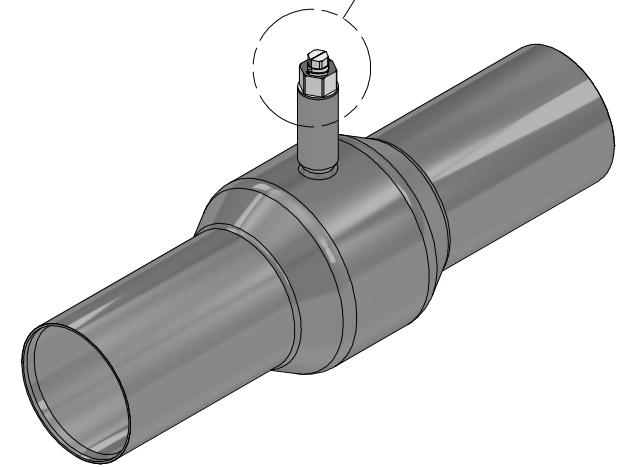
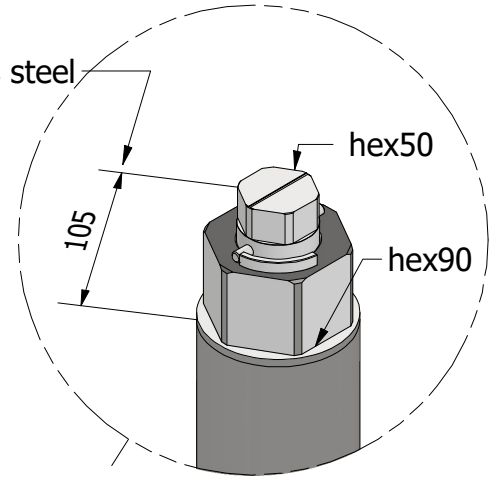


stainless steel



Valve control: 50mm hex socket.
A dry stem sealed directly at the valve body ensures greater operational safety and compensates for possible pre-insulation errors.
The stem consists of tubes 57×6 and 108×5.
*A different valve height is available upon request.

product code: <b>GLOBTOS P400-25 643 1,8</b>		manufacturer: <b>FWBV.com</b> Fully Welded Ball Valves	
product name: <b>GLOBTOS preinsulation dn400 pn25 hex 50/90 H=643 L=1810</b>		prepared for: <b>GLOBTOS</b> valve technology	
www.GLOBTOS.com pl@globtos.com +48726500100		www.GLOBTOS.com pl@globtos.com +48726500100	
drawn by: Janusz Ośmiałowski	date: 01.02.2024	scale: 1 / 11	notes:
checked by: Tomasz Ośmiałowski	version: 1.0	sheet size: A4	
approved by: Jacek Pawlikowski	weight: kg	unit: mm	