

A

485\*

Ø33.7

2.6

4.0

Ø38

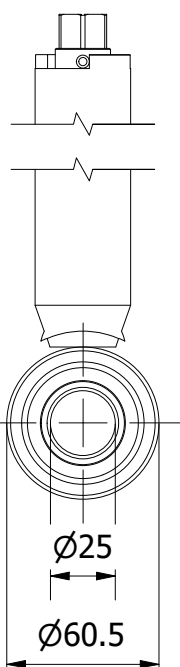
162

1510

stainless steel

hex19

105



VIEW A-A

Valve control: 19mm hex socket.
A dry stem sealed directly at the valve body ensures greater operational safety and compensates for possible pre-insulation errors.
The stem consists of tubes 38×3 and 21×3.
*A different valve height is available upon request.

product code: <b>GLOBTOS P25-40 F 485 1,5</b>		manufacturer: <b>FWBV.com</b> Fully Welded Ball Valves	
product name: <b>GLOBTOS preinsulation dn25 pn40 full bore hex19 H=485 L=1510</b>		prepared for: <b>GLOBTOS</b> valve technology	
drawn by: Janusz Ośmiałowski	date: 01.02.2024	scale: 1 / 3	notes:
checked by: Tomasz Ośmiałowski	version:	sheet size: A4	
approved by: Jacek Pawlikowski	weight: kg	unit: mm	
		www.GLOBTOS.com pl@globtos.com +48726500100	